



**FIRST COAST  
CARDIOVASCULAR  
INSTITUTE®**

[www.firstcoastcardio.com](http://www.firstcoastcardio.com)

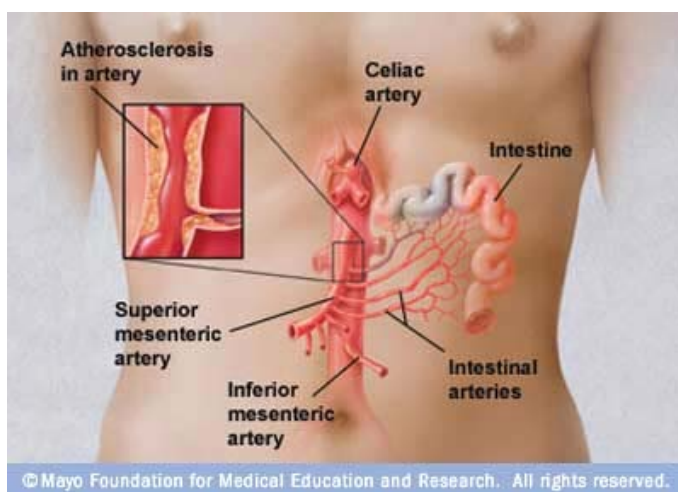


Like us on  
Facebook!



YouTube

## PATIENT PREPARATION & INSTRUCTIONS



- **Mesenteric Artery Doppler Ultrasound (Intestinal Arteries)**  
Duplex ultrasound evaluation of Mesenteric Arteries is a highly specialized ultrasound evaluation of the arteries feeding you stomach, intestines, liver, spleen, and abdominal aorta. This test allows the vascular technologist and your doctor to directly visualize these arteries for blockages (Calcification) which may be contributing to your symptoms.
- **Your doctor may have ordered this test if you are experiencing:**  
Acute (Fast) or Chronic (Dull) Abdominal Pain (Ischemia), Abdominal Pain after Eating, Abnormal Weight Loss, Diarrhea, Abdominal Noise (Bruit), or Mesenteric Ischemia.
- **Patient Preparation for Mesenteric Artery Doppler Ultrasound:**  
Nothing to eat or drink after midnight or 8 hours before testing. You may take all medicines with water only, no carbonated, sweetened, or caffeinated beverages these could possibly interfere with test results.

**JACKSONVILLE**  
T: 904.493.3333  
F: 904.493.2222

**ORANGE PARK**  
T: 904.644.0092  
F: 904.644.0099

**ST. AUGUSTINE**  
T: 904.436.6420  
F: 904.436.6424

**MACLENNY**  
T: 904.493.3333  
F: 904.493.2222

**PALATKA**  
T: 386.325.2836  
F: 904.493.2222